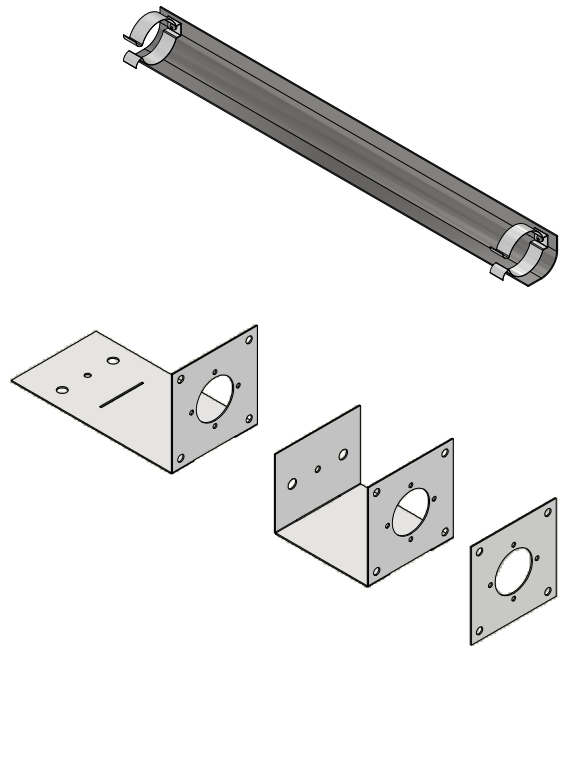
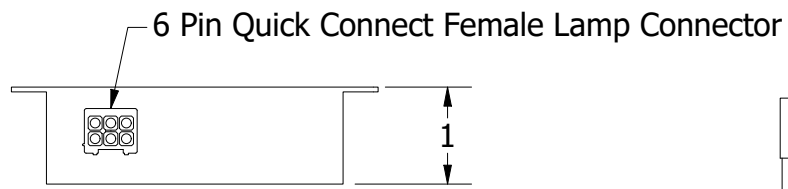


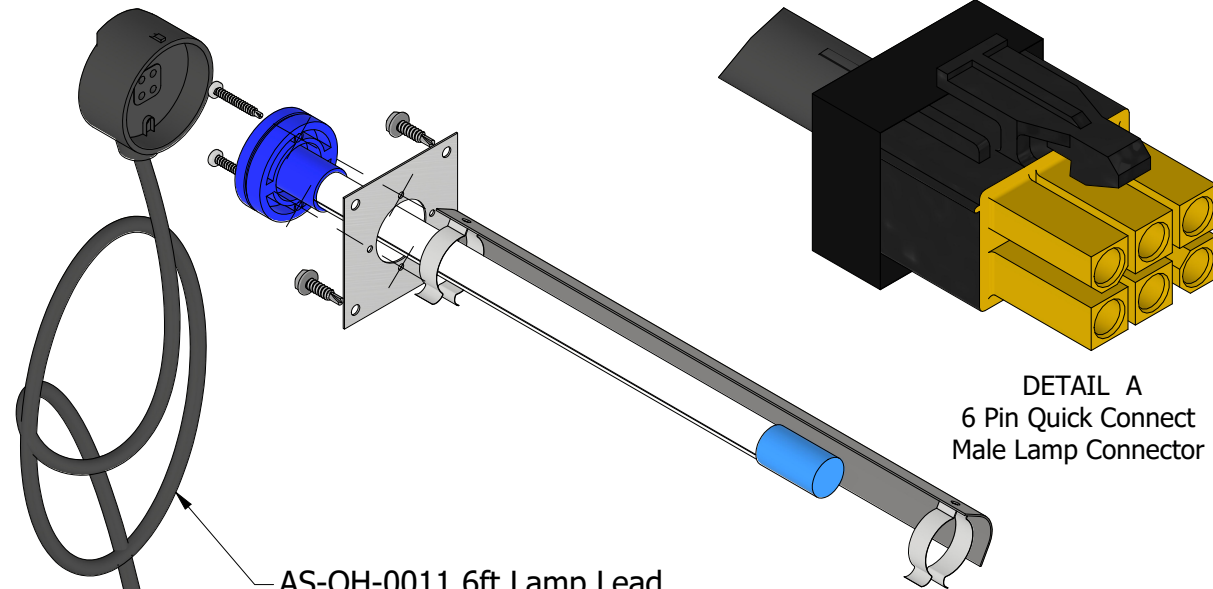
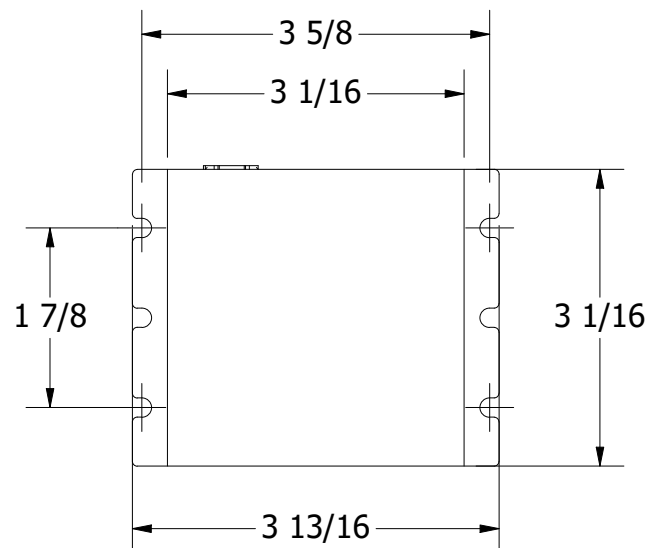
94-067 17" Snap on Light Shield



Adjustable Z Bracket for Lamp Mounting  
(Easily modify based on Mounting Requirement)



6 Pin Quick Connect Female Lamp Connector



AS-OH-0011 6ft Lamp Lead

DETAIL A  
6 Pin Quick Connect  
Male Lamp Connector

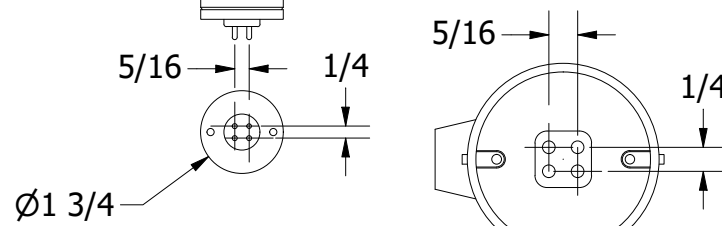
Input: 24VAC 50/60Hz  
Consumption @24V~ 0.9A

2 Conductor Power Cord

6.00 Ft

No Drill Magnet Mount  
Add on provided with  
UMX2419EZ-M

17" UVC 1 year Lamp  
(Replacement 17" T3 2 year Lamp Part No: AS-IH-1003)



Lamp Pins are rectangular  
&  
only goes on to Lamp Lead in orientation shown above.

DRAWN Anik I.	11/15/2022	Ultravation 67 TUBBS AVE, BRANDON VT-05733. 866-468-8247. www.ultravation.com		
CHECKED		TITLE		
QA		UMX2419EZ Series		
MFG		Ultravation (R) UltraMax UVEZ 24VAC Unit with one 17" lamp		
APPROVED		SIZE A3	DWG NO UMX2419 EZ Assembly	REV
All dimensions are in inches		SCALE NTS	TOLERANCE: ±0.02	SHEET 1 OF 1

